

Restorative Justice in the Built Environment

Interdisciplinary Dialogue Series



5:30 - 6:30 pm | Hybrid

Clockwise starting top left: 1) Photo by [Lorie Shaul](#) via Flickr. 2) "She Will Rise" mural by artist Rachel Wolfe-Goldsmith; photo by [Ted Eytan](#) via Flickr. 3&4) Photos by [Ted Eytan](#) via Flickr. Photo courtesy of [Ted Eytan](#) via Flickr.

This Dialogue Series will focus on conversations among community leaders, practitioners, and scholars reflecting on the relationship between restorative justice and built environment disciplines and practices (architecture, urban design, planning, historic preservation, real estate, and geography), especially from the perspectives of African American, Latin American and Latinx, Asian American and Pacific Islander, and Indigenous communities.

September 8

Restorative Justice's Opportunities and Challenges in Lakeland, College Park

September 15

Foundations of Restorative Justice in the Built Environment: Telling Stories, Preserving Place

September 29

Examining Gentrification, Displacement, and Racial Capitalism through a Restorative Justice Framework

October 6

Property, Housing, and Land: Pillars or Barriers of Restorative Justice?



Restorative Justice in the Built Environment

Interdisciplinary Dialogue Series



5:30 - 6:30 pm | Hybrid

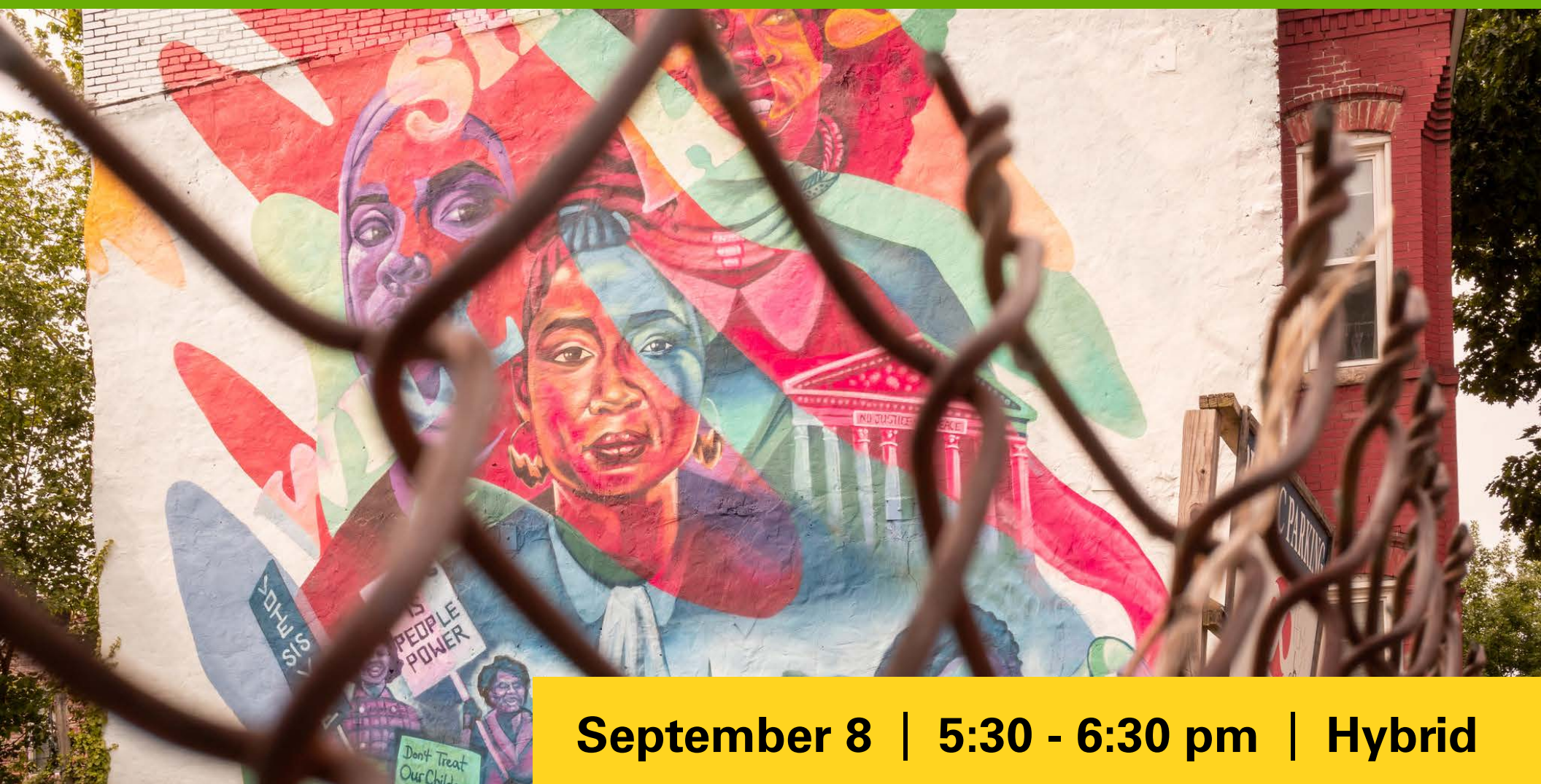
This Dialogue Series will focus on conversations among community leaders, practitioners, and scholars engaged reflecting on the relationship between restorative justice and built environment disciplines and practices (architecture, urban design, planning, historic preservation, real estate, and geography), especially from the perspectives of African American, Latin American and Latinx, Asian American and Pacific Islander, and Indigenous communities.

- September 8** Restorative Justice's Opportunities and Challenges in Lakeland, College Park
- September 15** Foundations of Restorative Justice in the Built Environment: Telling Stories, Preserving Place
- September 29** Examining Gentrification, Displacement, and Racial Capitalism through a Restorative Justice Framework
- October 6** Property, Housing, and Land: Pillars or Barriers of Restorative Justice



Restorative Justice's Opportunities and Challenges in Lakeland, College Park

Interdisciplinary Dialogue Series (#1)



September 8 | 5:30 - 6:30 pm | Hybrid

Photo courtesy of Ted Eytan via [Flickr](#). Artist: Rachel Wolfe-Goldsmith

Dialogue #1

This session is an introduction to the Dialogue Series and to the Lakeland community. Topics include past and current planning challenges in Lakeland and formation of the Restorative Justice Commission in College Park and addresses the questions:

- What is restorative justice?
- What are or should be the goals of the Restorative Justice Commission?

Dialogue Participants

- **Dr. Mary C. Sies**, Lakeland Community Heritage Project
- **Maxine Gross**, Lakeland community leader
- **Terry Schum**, College Park planning representative
- **Professor Andrew Fellows** and **Dr. Isabella Alcañiz**, Restorative Justice Commissioners

Registration is required.



Registration & Details



SCHOOL OF
ARCHITECTURE,
PLANNING & PRESERVATION

go.umd.edu/restorative_justice1

Maryland's Built Environment School