

If you have trouble viewing this e-mail, read the GCI Bulletin online at <http://www.getty.edu/conservation/publications/bulletin/current.html>.



December
2009

[Share with a colleague](#)

PROJECTS AND ACTIVITIES

Conservation and Management of the Tomb of Tutankhamen

Egypt's Supreme Council of Antiquities and the Getty Conservation Institute have commenced a five-year collaborative project that will undertake detailed planning and implementation for the conservation and management of the tomb and its wall paintings. The project is intended as a model case study for the preservation of similar sites in the region.

[Listen to an interview](#) with GCI Associate Director, Jeanne Marie Teutonico, about the project.

[Find out more about this new initiative.](#)



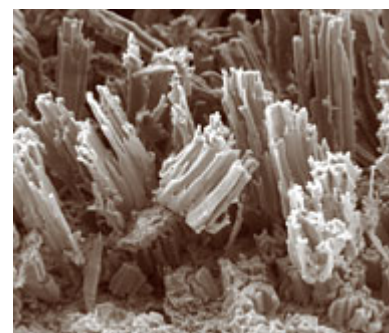
Detail of painting on the north wall of Tutankhamen's burial chamber showing Osiris, lord of the underworld, embracing Tutankhamen, who is followed by his *ka* or spirit twin. Photo: Lori Wong

Workshop: Poultrice Desalination of Porous Building Materials, New Orleans, Louisiana, May 24–28, 2010

This hands-on workshop, designed for field-based conservation professionals, will present new applied research on the process of poultrice desalination through practical applications, and will provide participants with a solid foundation for the poultrice treatment of salt-laden building materials.

Application deadline extended to January 4, 2010.

[Learn more about the workshop and apply online.](#)



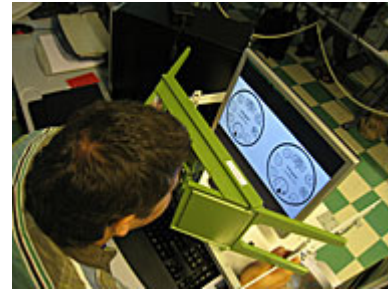
Environmental scanning electron microscope image of columnar sodium chloride crystals growing and disrupting a limestone substrate. Photo: Eric Doehne

Architectural Records, Inventories, and Information

Systems for Conservation (ARIS)

ARIS09—the fourth in the series of courses that have trained almost sixty mid-career professionals—took place in Rome from September 2 to October 2. This unique course, which looks at the conservation of built heritage through the use of high-technology documentation tools and easy to use techniques and research, will now undergo formal evaluation to measure its impact on the field of conservation.

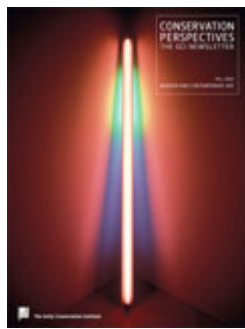
[Learn more about this course.](#)



ARIS09 participant creating photogrammetric stereopair images. Photo: Rand Eppich

PUBLICATIONS

Conservation Perspectives *The GCI Newsletter*



The GCI is pleased to present the renamed and redesigned publication *Conservation Perspectives, The GCI Newsletter*. This inaugural edition focuses on the conservation of modern and contemporary art.

Join the conversation. Post your comments about our featured roundtable discussion [Competing Commitments: A Discussion about the Ethical Dilemmas in the Conservation of Modern and Contemporary Art](#).

[Read this issue online.](#)

Technician Training for the Maintenance of In Situ Mosaics (now available in Arabic)



These didactic materials were developed for a Getty Conservation Institute and Institut National du Patrimoine, Tunisia (INP) training course on the maintenance of in situ mosaics—first organized in 2001—for workers employed by the INP.

[Access the free Arabic PDF online.](#) Also available in [English](#) and [French](#).

Recently acquired titles



GCI Information Center. Photo: Sean Charette

Recently acquired titles in the Conservation Collection in the Research Library at the Getty Research Institute are available to readers on site at the Getty Center. Some materials are available through your library's interlibrary loan service.

[Access the list of titles from the GCI Information Center page.](#)

CONTACT US

The Getty Conservation Institute

1200 Getty Center Drive, Suite 700
Los Angeles, CA 90049-1684
USA

Tel.: (310) 440-7325

Fax: (310) 440-7702

www.getty.edu/conservation

GCIBulletin@getty.edu

Press inquiries: mabraham@getty.edu

GCI Mission Statement

The Getty Conservation Institute works internationally to advance conservation practice in the visual arts-broadly interpreted to include objects, collections, architecture, and sites. The Institute serves the conservation community through scientific research, education and training, model field projects, and the dissemination of the results of both its own work and the work of others in the field. In all its endeavors, the GCI focuses on the creation and delivery of knowledge that will benefit the professionals and organizations responsible for the conservation of the world's cultural heritage. The GCI is a program of the J. Paul Getty Trust, an international cultural and philanthropic institution that focuses on the visual arts that also includes the J. Paul Getty Museum, the Research Institute, and the Getty Foundation.

About the GCI Bulletin

The GCI Bulletin is published electronically six times a year to keep partners and supporters up-to-date with GCI programs and activities.

You are subscribed as rniu@rniu.buap.mx.

[Subscribe to the GCI Bulletin](#) | [Unsubscribe here](#)

[C O P Y R I G H T © 2009 J. Paul Getty Trust](#) | [Privacy Policy](#)



The Getty Conservation Institute