

monade



**Last Days! Pre-order ending soon**

**Special Discount -20%**

—

***Imagining the Evident* by Álvaro Siza**

***Pre-orders ending next Wednesday, 30th November!***

The referential book by Álvaro Siza on his own work, in its first English edition. Describing some of his projects, his expectations and struggles, references and decisions, this book is a fundamental contribution to the understanding of Álvaro Siza's architectural thinking.

The text is accompanied by an extensive set of drawings from his notebooks, an obstinate presence in Siza's particular way of working, some of which never published before.

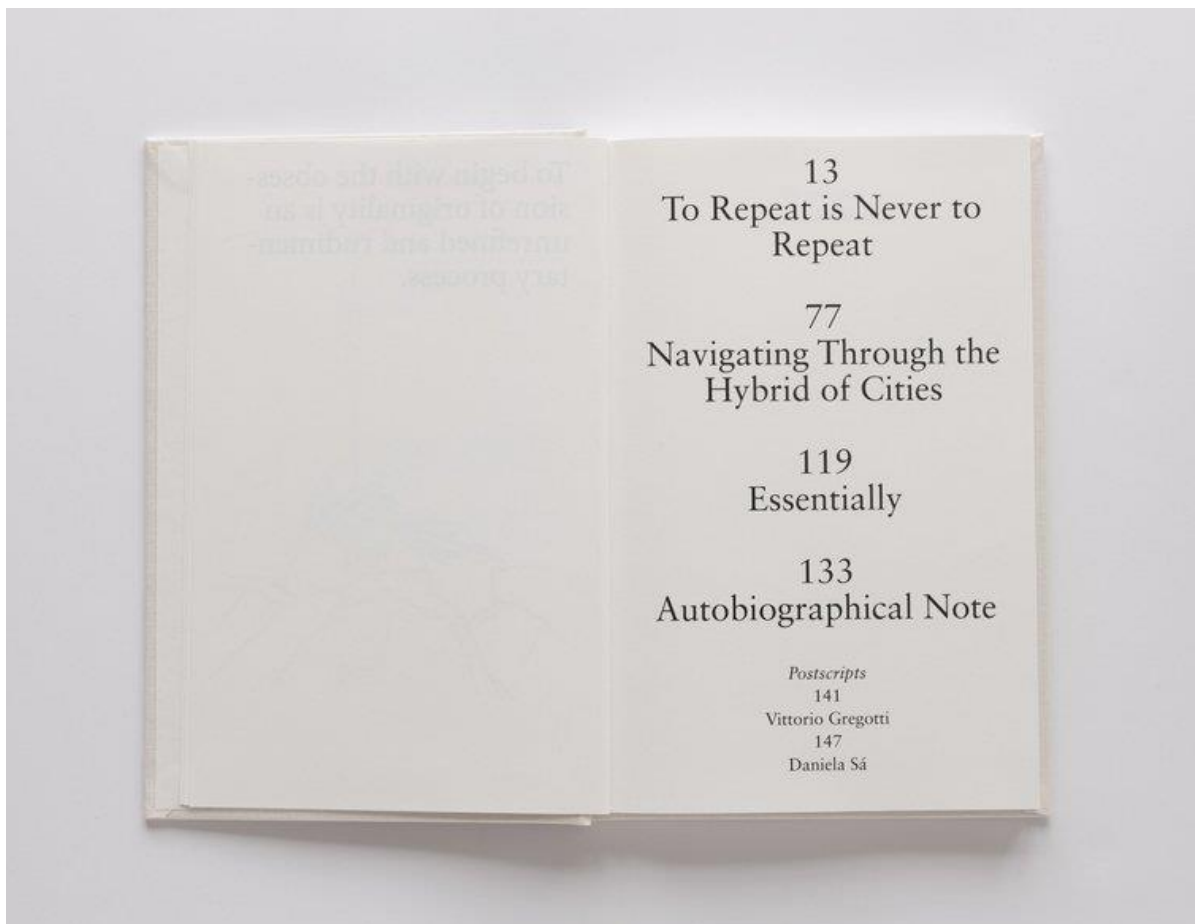
A personal and fundamental testimony of one of the most celebrated living architects, covering the full range of design – from architecture to city planning, furniture and objects – in a must-read book for all interested in Art and Architecture.

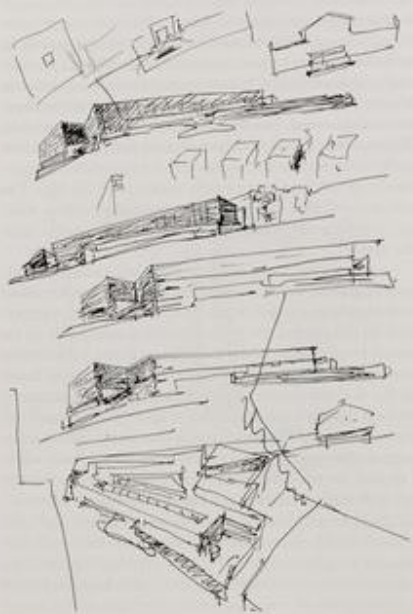
*Postscripts by Vittorio Gregotti (1998) and Daniela Sá (2021)*

*Ed. Daniela Sá and João Carmo Simões*

— *Shipings on 30th November* —

**PRE-ORDER -20% Discount!**



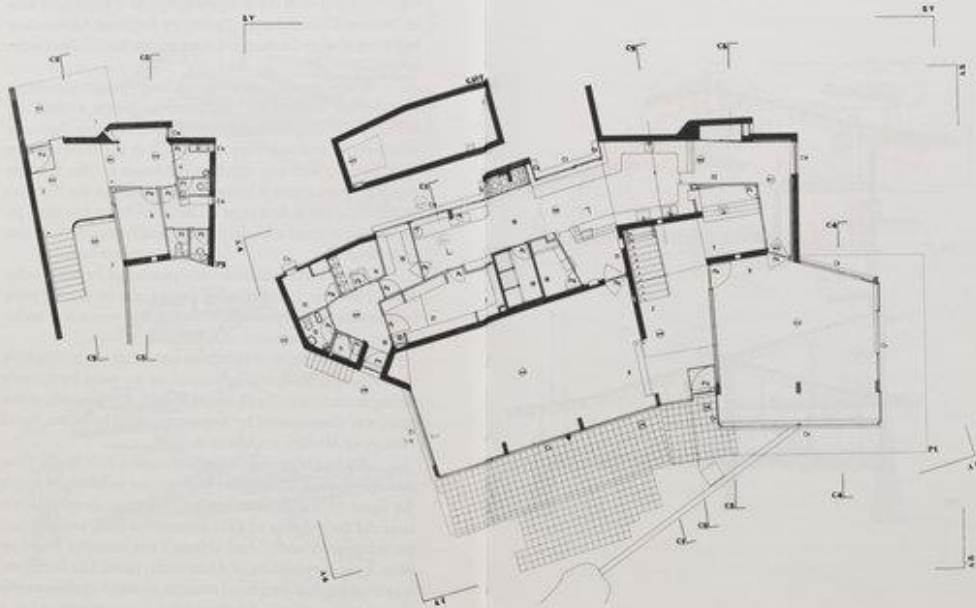


Study on the angle solution between the auditorium (on the left) and the entrance (on the right)  
Galician Center of Contemporary Art, Santiago de Compostela, 1985-1993

### Two Museums

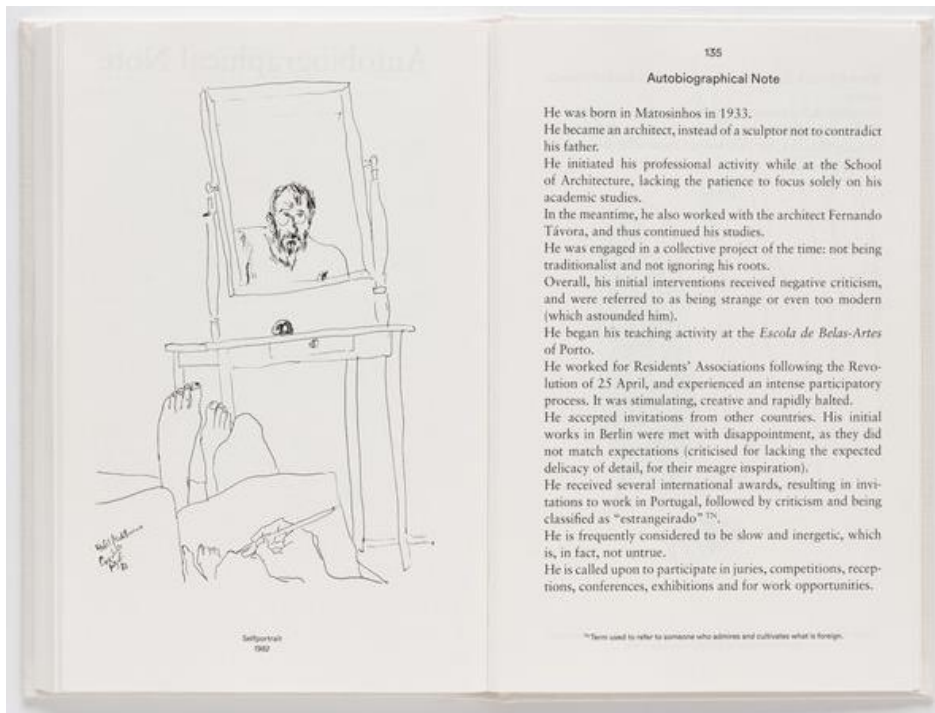
When I was commissioned to build a museum in Santiago de Compostela, I was expressly asked to position it far away from the road. Once again, this generalized fear of architecture was evident, and understandably so, it would be unfair to suggest otherwise. When something is built a few metres away from a building that has been classified as a national monument, as is the case of the convent of Santo Domingo de Bonaval, there are fears that all will be ruined: that is why I was asked to "hide" the museum. I argued that a cultural centre is such a significant building in the life of a city that it could not be an annex of the convent, which itself has since been transformed into an exhibition gallery. This important connection with the road was finally accepted, as I was also able to demonstrate that the convent had never been entirely visible, due to a high granite wall that delimited the agricultural property. Once the position of the new building had been defined, it was necessary to become immediately acquainted with the convent.

There are two volumes in the museum which, in concurrence with the entrance, define a small outdoor space that establishes a dialogue with the platform enclosed by the two façades of the convent. Facing each other, these two urban spaces mark out access to the garden, which thereby becomes the central feature upon which all the other buildings depend, as was also the case at the time of the construction of the convent. Immediately after this "gate" of entry to the garden, there is a modest building I did not demolish that communicates with the paths along the various platforms. The actual plan of the building opens out



Entrance level and Restaurant level  
Novo Pro House, Lago de Páramo, 1958-1962

1. Guest entrance 2. Hall 3. Distribution 4. WC 5. WC 6. Coat 7. Bar 8. Reception 9. The Room 10. Service 11. Storage 12. WC 13. Room 14. Drawing room 15. Office 16. Kitchen 17. Distribution area 18. Storage 19. Corridor 20. Wine cellar 21. Party 22. Distribution area 23. Access to the basement 24. Basement



**Also still available in limited edition**



# Architecture. A Dangerous Game

—

## New Silkscreen by Álvaro Siza

***“There is a game in which the player places an open palm and splayed fingers on a table, then, using a penknife, stabs back and forth between the gaps, faster and faster. A dangerous game. Such is Architecture.”***

**Álvaro Siza**

**ORDER**

Signed and Numbered by Álvaro Siza

Limited Edition of 50

Monade 2022

Paper size: 470 x 390 mm / Image size 290 x 210 mm

Signed and numbered in pencil on the front

Silkscreen 2 colours, Fabriano Acid-free paper 300 gms

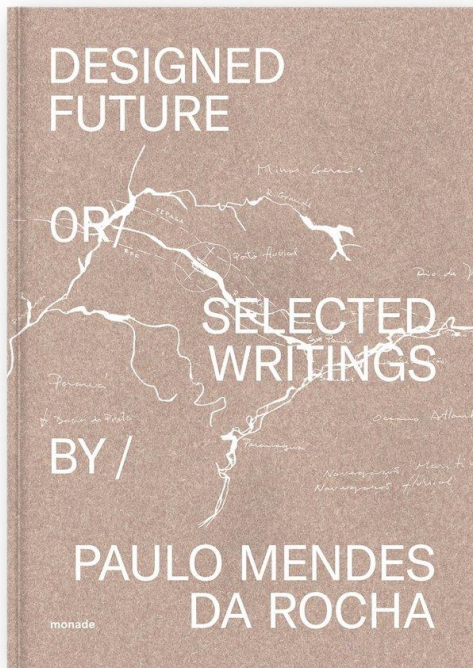
Wrapped in Acid-free tissue paper and packaged in reinforced cardboard tube.

Shipping carefully worldwide.

Framed option available by request.

**Suggested Books, Silkscreen and Prints**

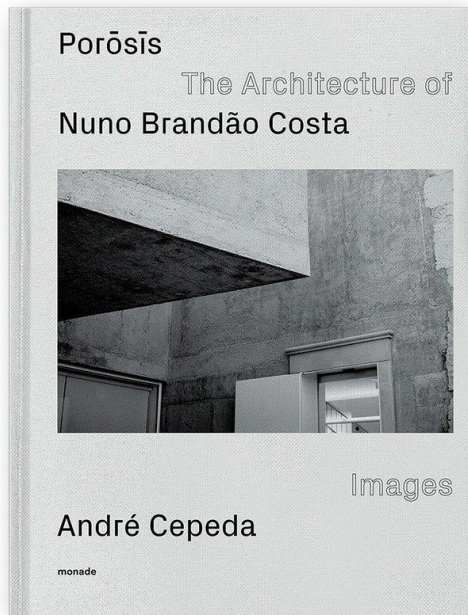




## Designed Future / Paulo Mendes da Rocha

*Designed Future* is a journey through the modern era: our life in cities, the Americas, new territories and the old continent, of vision and design as essential tools for building the future. For the first time translated in English, it discloses a must-read intense and provocative thinker in contemporary times.

Order

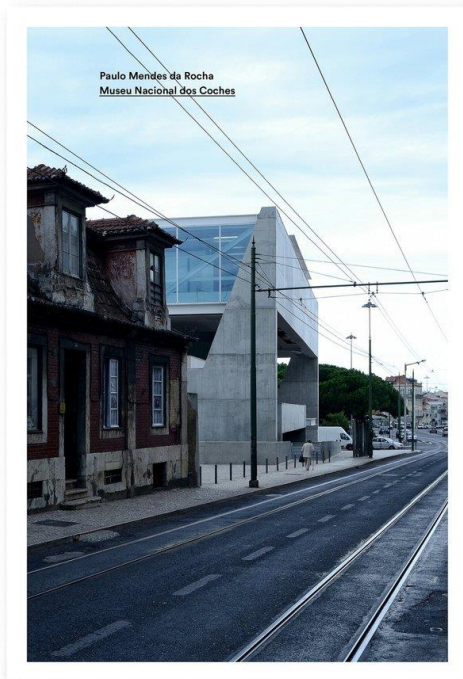


## POROSIS / The Architecture of Nuno Brandão Costa

André Cepeda travelled for some months photographing the work of Nuno Brandão Costa. More a sensitive approach than a literal document, this book is a powerful testimony of Portuguese architecture nowadays, through the surprising work of this architect. The images, by one of the most highly regarded Portuguese photographers, brilliantly challenge the limits of an architectural monograph.

Order

## Paulo Mendes da Rocha / Museu Nacional dos Coches



Paulo Mendes da Rocha is one of the most acclaimed contemporary architects, Pritzker Prize 2006 and RIBA Royal Gold Medal 2017. This book presents the first great work in Europe by the Brazilian architect. It is in Lisbon, in one of the best known and symbolic areas of the city, the district of Belém, that the National Coach Museum is located. Built on the famous site where the Portuguese set sail to travel overseas, the Museum promises to stimulate thought on the relationship between the great city and its buildings, Europe and America, and the very idea of being modern.

Order

## [Silkscreen + Book] Imagining the Evident / Álvaro Siza – Limited Edition

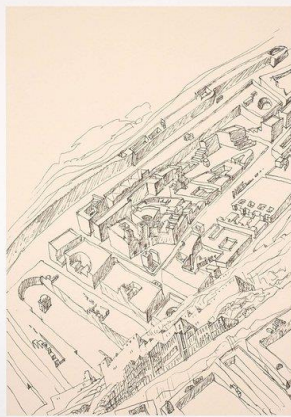
Book + **Silkscreen** **Álvaro Siza**, 2021

Signed and Numbered by the Author

Limited Edition of 50

Celebrating the English edition of “Imagining the Evident” a silkscreen is launched of a drawing specially selected by Álvaro Siza to accompany this book.

Order



## Temple of Aphaia VIII, Aegina / João Carmo Simões



Print

Temple of Aphaia VIII, Aegina, Greece, 2019

by *João Carmo Simões*. **monade** limited edition  
of 50 copies

Large scale print.

Paper size: 100x70 cm or 70x50 cm. Photo  
quality Inkjet Print on Acid free Enhanced  
Matte Paper (192 g/m<sup>2</sup>). Wrapped with tissue  
paper inside of a reinforced cardboard tube.

Order

## Ville Savoye, Le Corbusier / João Carmo Simões



Print

Ville Savoye, Le Corbusier, Poissy, France,

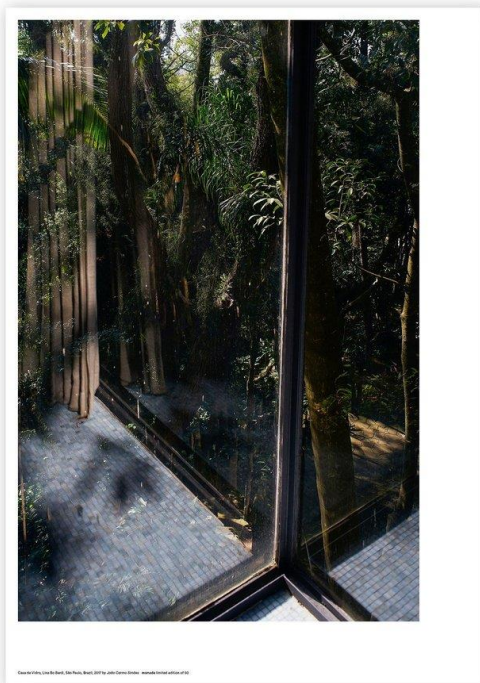
2019 by *João Carmo Simões*. **monade** limited  
edition of 50 copies

Large scale print.

Paper size: 100x70 cm or 70x50 cm. Photo  
quality Inkjet Print on Acid free Enhanced  
Matte Paper (192 g/m<sup>2</sup>). Wrapped with tissue  
paper inside of a reinforced cardboard tube.

Order





## Casa de Vidro, Lina Bo Bardi / João Carmo Simões

Print

Casa de Vidro, Lina Bo Bardi, São Paulo, Brazil, 2017 by *João Carmo Simões*. **monade** limited edition of 50 copies

Large scale print.

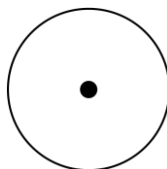
Paper size: 100x70 cm or 70x50 cm. Photo quality Inkjet Print on Acid free Enhanced Matte Paper (192 g/m<sup>2</sup>). Wrapped with tissue paper inside of a reinforced cardboard tube.

Order

[www.monadebooks.com](http://www.monadebooks.com)

Follow us:

[@monade\\_books](#) [#monadebooks](#) facebook



monade is an independent publisher founded by architects. It is used as a platform for the creation of books on architecture, photography, art and thought, © 2022 MONADE, Rua Rodrigues Sampaio 19, 5B, 1150-278 Lisboa , Portugal